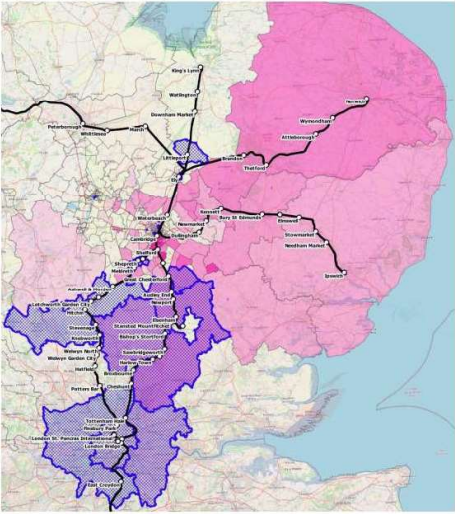


FEN DITTON PARISH COUNCIL

was one of the input sources used to inform the Strategic Outline Business Case previously undertaken for this scheme. Even in the absence of a rail station, the Biomedical Campus has a wide-reaching catchment area, covering the majority of East Anglia.

Figure 2 - Origins of 2015 Demand to the Cambridge Biomedical Campus (Purple) and Potential Future Growth Areas



Source: Mott MacDonald / CSRM Model

Also shown on the map are areas identified either from the SOBC or from the CSRM model future scenarios, that are likely to generate significant increases in trips to the Biomedical