

**These are the notes referred to on the following official copy**

The electronic official copy of the title plan follows this message.

Please note that this is the only official copy we will issue. We will not issue a paper official copy.

This official copy was delivered electronically and when printed will not be to scale. You can obtain a paper official copy by ordering one from HM Land Registry.

This official copy is issued on 26 September 2019 shows the state of this title plan on 26 September 2019 at 15:47:49. It is admissible in evidence to the same extent as the original (s.67 Land Registration Act 2002). This title plan shows the general position, not the exact line, of the boundaries. It may be subject to distortions in scale. Measurements scaled from this plan may not match measurements between the same points on the ground.

This title is dealt with by the HM Land Registry, Peterborough Office .

© Crown copyright. Produced by HM Land Registry. Reproduction in whole or in part is prohibited without the prior written permission of Ordnance Survey. Licence Number 100026316.

# H.M. LAND REGISTRY

TITLE NUMBER

## CB 107906

ORDNANCE SURVEY  
PLAN REFERENCE

TL 4251 F

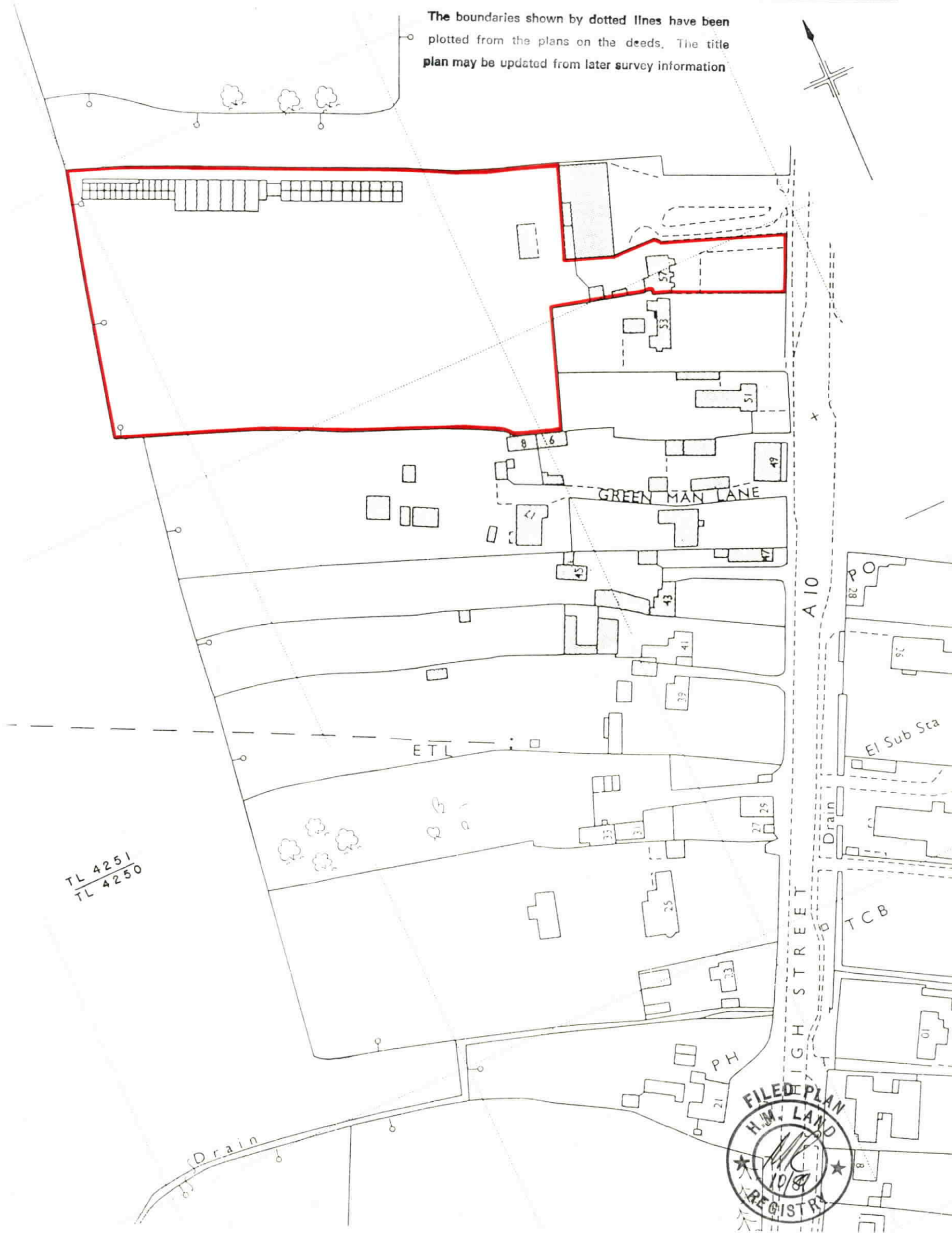
Scale 1:250  
Enlarged from 1:2500

COUNTY CAMBRIDGESHIRE

DISTRICT SOUTH CAMBRIDGESHIRE

© Crown copyright

The boundaries shown by dotted lines have been plotted from the plans on the deeds. The title plan may be updated from later survey information



TL 4251  
TL 4250

FILED PLAN  
H.M. LAND  
REGISTRY  
10/8