

1.2 Connected and Integrated

Complete failure to recognise and include existing RoW and current equestrian communities and access.

Incorrect labelling of RoW.

No inclusion of equestrian access opportunities in project.



KEY

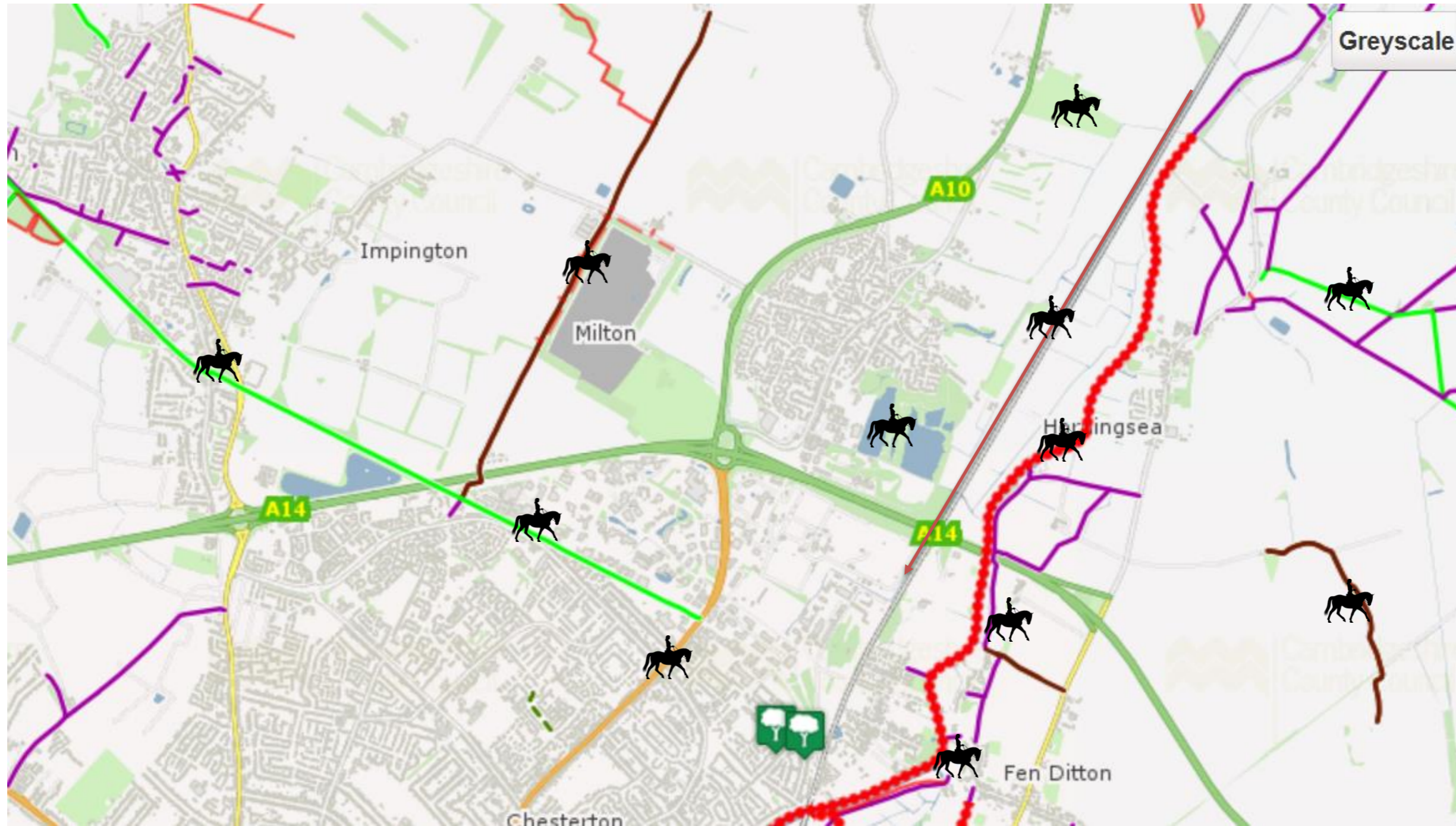
- | | |
|---|---|
| 1 Improve links on either side of the Jane Coston Bridge | 6 New crossing on Milton Road (likely to be underpass) |
| 2 Existing underpass under A14 connecting to new cycle path | 7 New crossing on Milton Road (likely to be a bridge) |
| 3 New underpass under A14 for Greenway cycle route | 8 Improved junction for pedestrian and cycle movement in all directions |
| 4 New crossing points over the Guided Busway (indicative locations) | — Strategic routes for pedestrians and cyclists |
| 5 New pedestrian and cycle bridge over railway | |



Rights of Way Network

Routes have been erroneously claimed as 'cycleways' when they are
bridleways (green), byways (brown), omitted (Greenway project) which are NMU's.

Some restrictive cycleways are to be challenged.



2.1.2 Site Plan

Does not include RoW network and does not recognise nor include equestrian communities and access. The plan is therefore misleading.



2.1.3 Connections

Doomed to be incorrect since the previous maps were.

No reference whatsoever to equestrian access. This fails to meet the Cambs and Peterborough LTP which calls for Active Travel defined as pedestrians, cyclists and equestrians.

