

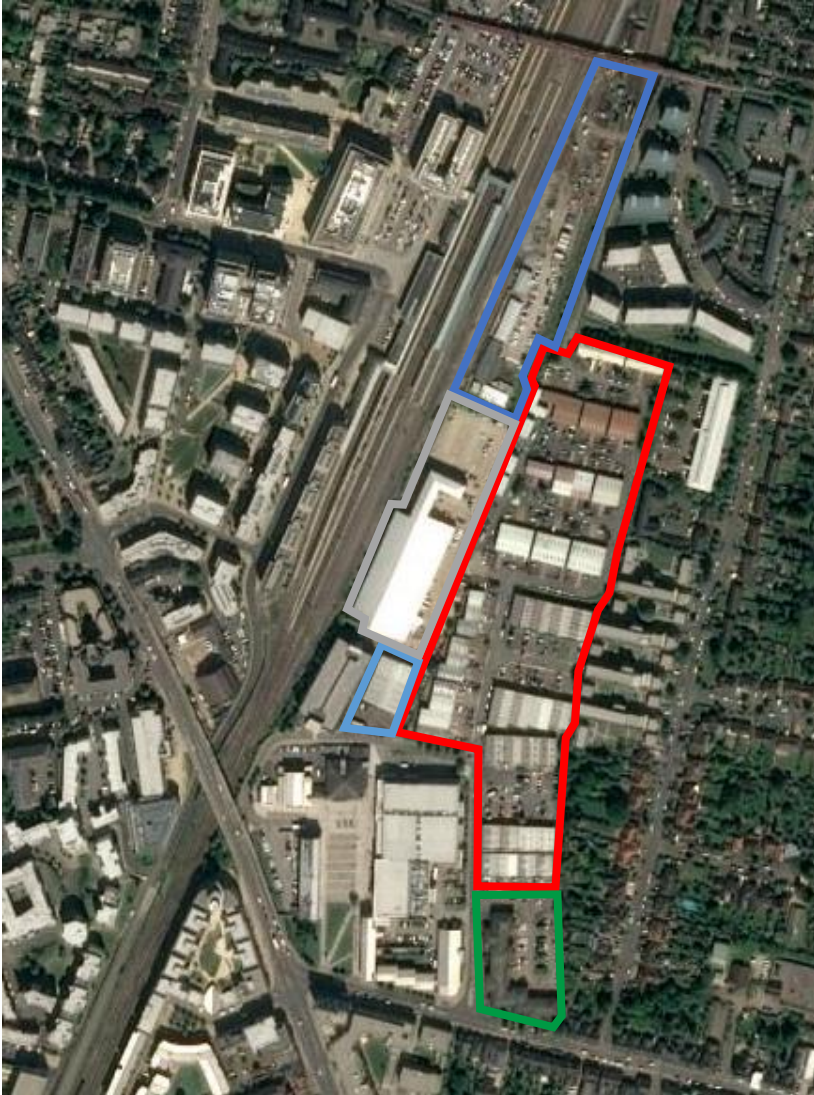
# Clifton Road Industrial Estate

## Site Use and Ownerships


USS is the major long leaseholder of the majority of the site allocation, approximately 4ha of the wider allocation. Cambridge City Council is the freeholder.

The other landowners / occupiers in the Clifton Road Area allocation include the following:

-  Network Rail
-  Royal Mail
-  Pickfords Self Store
-  Clifton Court, occupiers including:
  - Barclays Bank
  - Dartington Wealth Management
  - Feilden+Mawson LLP
  - Reed Recruitment Agency
  - Eurotech



The extent of USS's ownerships is shown on the map, illustrating that they own the majority of the site allocation. There are multiple occupiers operating from the units located on the Site offering a range of services and goods.

-  USS Site, occupiers including:
  - Clip 'n' Climb (climbing centre)
  - Cambridge Science Centre (science museum)
  - Screwfix (building materials supplier)
  - Howdens (kitchen furniture shop)
  - Toolstation (building materials supplier)
  - Plumbcity (plumbers merchant)
  - Halfords Autocentre (MOT centre)
  - Cambridge Print and Copy (digital printer)
  - Hertz (car rental company)
  - German Tech Cars (auto repairs)
  - Salon Services (beauty supplier)
  - Brewers Decorators (paint shop)