

Site 4 – Land south of The Causeway, Bassingbourn Flood Risk & Drainage Review

1 Site Overview

Ground levels on site appear to be fairly flat with a slight but noticeable fall to the south-west corner. There are no ditches on or in the vicinity of the site which suggests that the sites' geology is likely to be permeable.

The bedrock geology at the site is shown on the British Geological Survey (BGS) on-line maps to be Chalk (Zig Zag), no superficial deposits are recorded. A nearby borehole record shows chalk through to 247ft below ground level (bgl).

2 Flood Risk

The site lies in Flood Zone 1 and is at low risk of flooding from tidal/fluvial sources (see Figure 1). The closest ditch/drain is approximately 200 metres (m) east of the site.

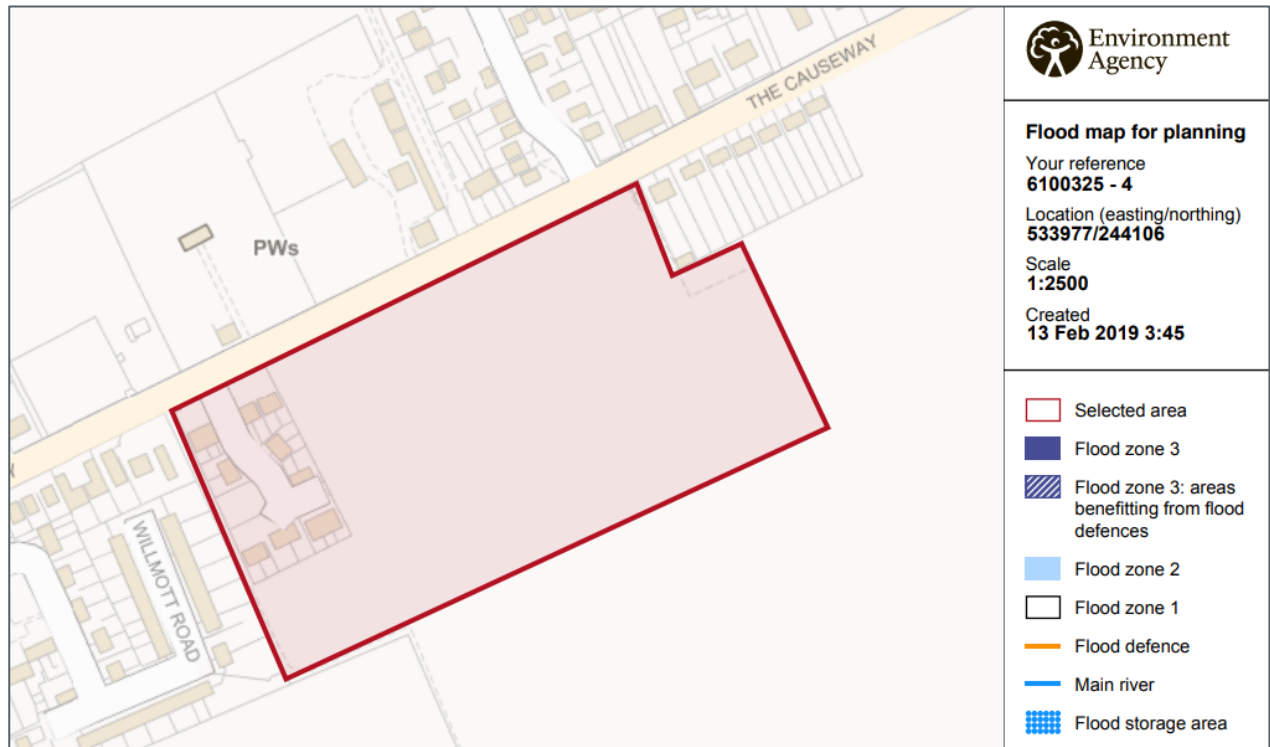


Figure 1 – Environment Agency flood map



Document Title: Flood Risk & Drainage Review
Job Title: Site 4 – Land south of The Causeway, Bassingbourn

Document Reference: 6100325-MLM-ZZ-XX-RP-C-0003
MLM Reference: JRC/6100325/BH
Date: 25 March 2019

The site is shown to be at very low risk of surface water flooding (see Figure 2).

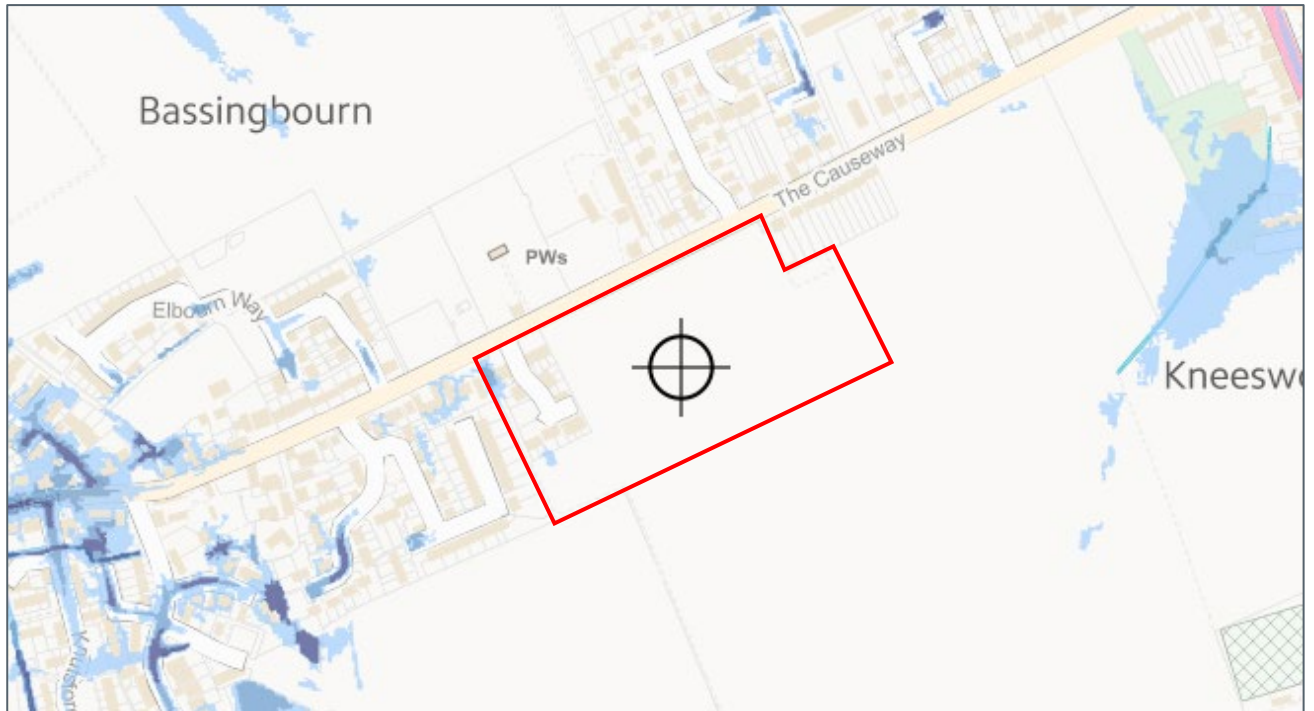


Figure 2 – Surface water flood map

The site is not a risk of flooding from reservoirs.

The site is not in a Groundwater Source Protection Zone.

3 Surface Water Drainage

The lack of watercourses on/surrounding the site, coupled with the information from the BGS website, suggests that infiltration drainage is likely to be viable at the site.

The use of infiltration is in line with the requirements of the drainage hierarchy as set out in Building Regulations Part H and the requirements of the Cambridgeshire Lead Local Flood Authority (LLFA). The drainage hierarchy is:

- Via infiltration;
- To watercourse;
- To sewer.

At this stage there is no site investigation or permeability testing information available and suitable testing to BRE365 will need to be undertaken.

The drainage strategy will need to meet the requirements of Cambridgeshire LLFA including allowance for rainfall in line with current guidance, treatment of surface water run-off and preferential use of open SuDS systems for the attenuation of surface water run-off. The drainage hierarchy in the 'Guidance for Developers' document should be followed.