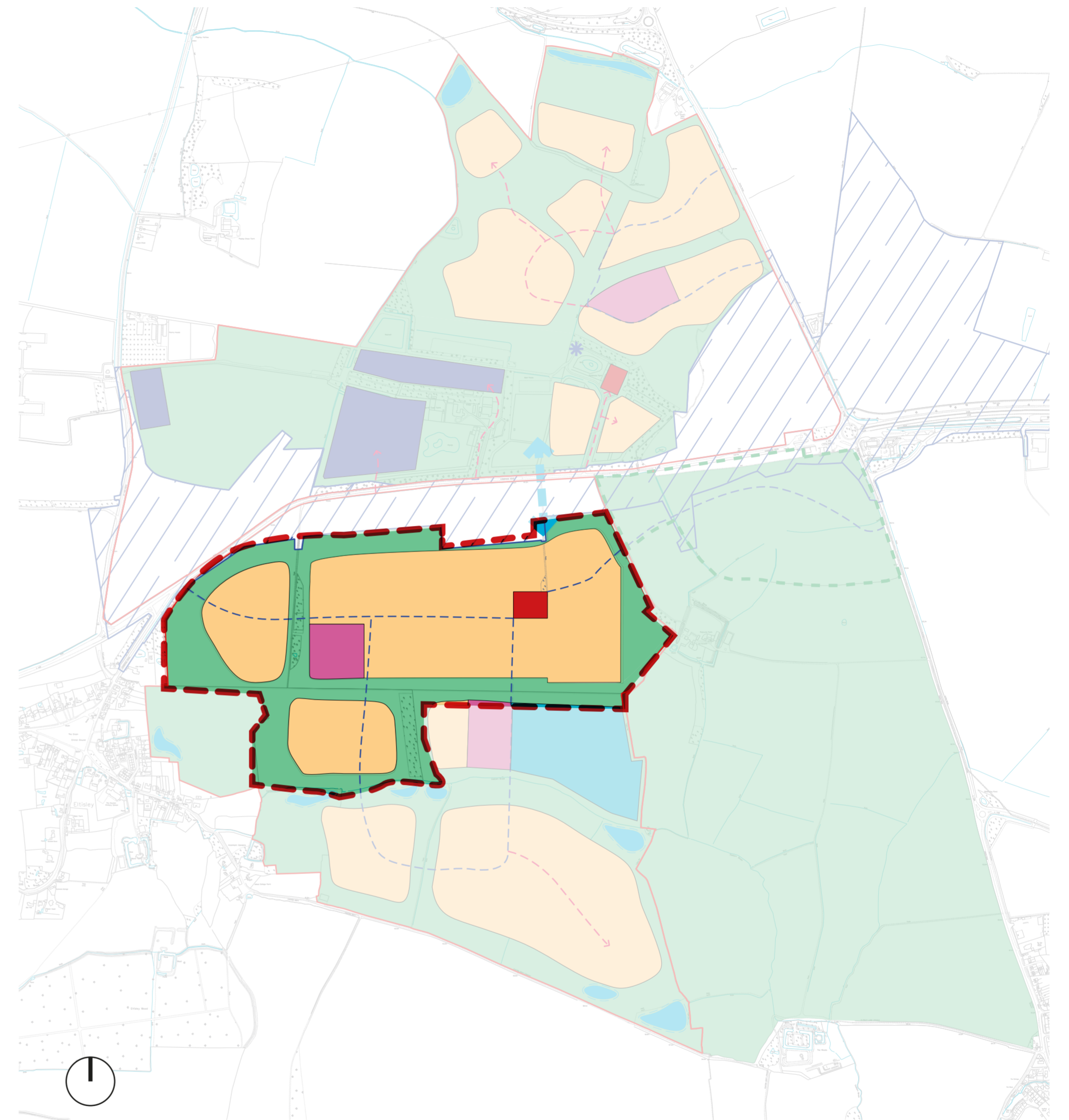


Initial phase (2000 homes) Land Budget Summary

Land Uses	CCfE ownership			Other ownership	Totals
	NE area	NW area	SW area	Option Agreement Land	
Residential	39.4	0.0	57.25 (95.2)	5.2	139.8
Employment	0.0	1.8	0.0	10.9	12.8
Mixed Use	0.0	0.0	1.0	0.5	1.5
Secondary Ed.	0.0	0.0	11.0	0.0	11.0
Primary Ed.	3.0	0.0	3.0 (6.0)	0.0	9.0
Open Space (including grey and blue infr. and est-west rail)	38.6	22.9	78.5	32.7	172.8
A428 works area within site boundary	19.5	18.7	15.0	1.6	54.8
Site Area (ha)	100.5	43.5	206.6	51.0	401.7
N. of homes at 35dph	1380		2004 (3331)	182	4893
Total	4711				



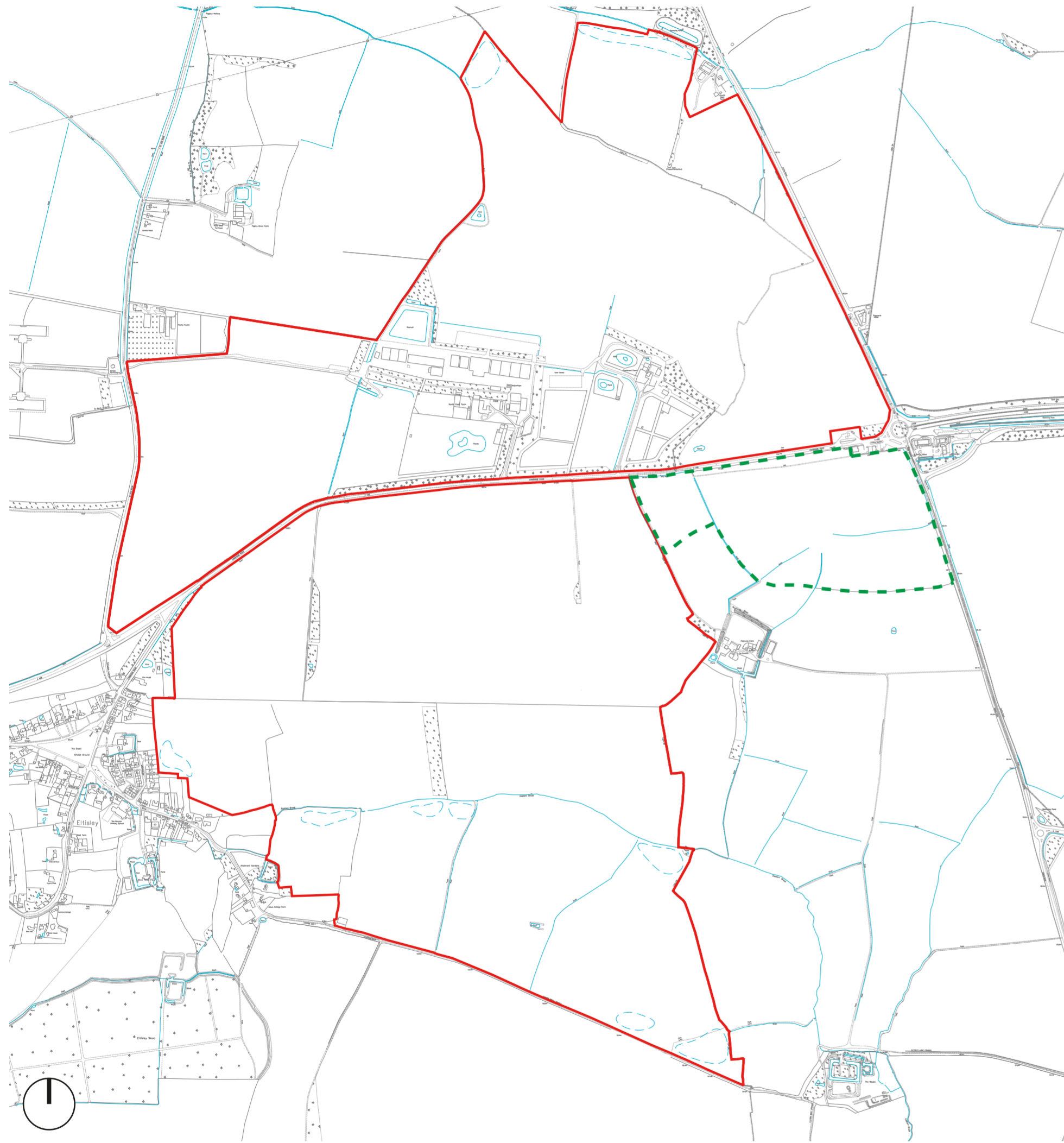
Drawing Reference: 01945_Land Budget Plan_P1LB01



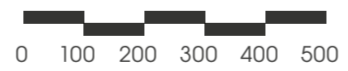
Key

- Site development boundary
- Residential
- Employment
- Mixed Use
- Secondary Education
- Primary Education
- Open Space (including proposed woodlands, existing trees, formal sports, food growing, grey and blue infrastructure and East-West rail)
- Indicative Primary Route Network
- Indicative Secondary Route Network
- A428 Works Area
- ↔ Sustainable Travel Connection
- ✳ Community Facilities
- ✳ Transport Hub
- Indicative SuDS

Site development boundary

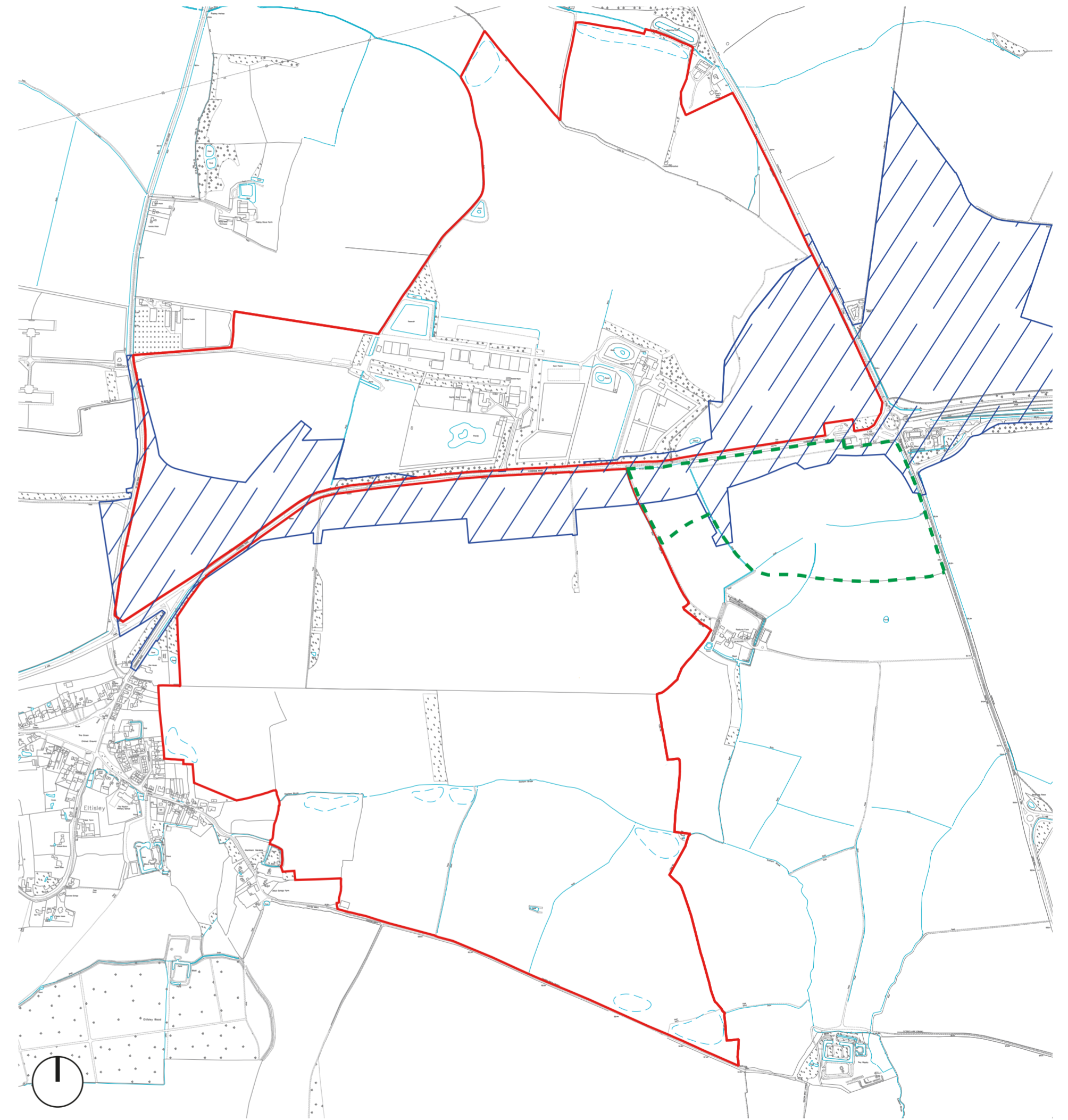


Drawing Reference: 01945_Site Development Boundary_SK010



Key

- Site development boundary
- - - Submitted HEELA Site Reference: 40076
- Land south west of Caxton Gibbet



Drawing Reference: 01945_Site Development Boundary_SK010



Key

- Site development boundary
- ▨ A428 Works Area
- - - Submitted HEELA Site Reference: 40076
- Land south west of Caxton Gibbet



Little
Steps
become
Great
Strides

A Vision for the Kingsfields



architects
masterplanners
placemakers