

Site boundary

Land East of Hardwick,
South Cambridgeshire
Hill Residential and Chivers Farms
(Hardington) LLP

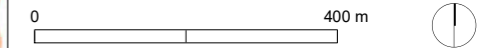


Figure 1: Site location

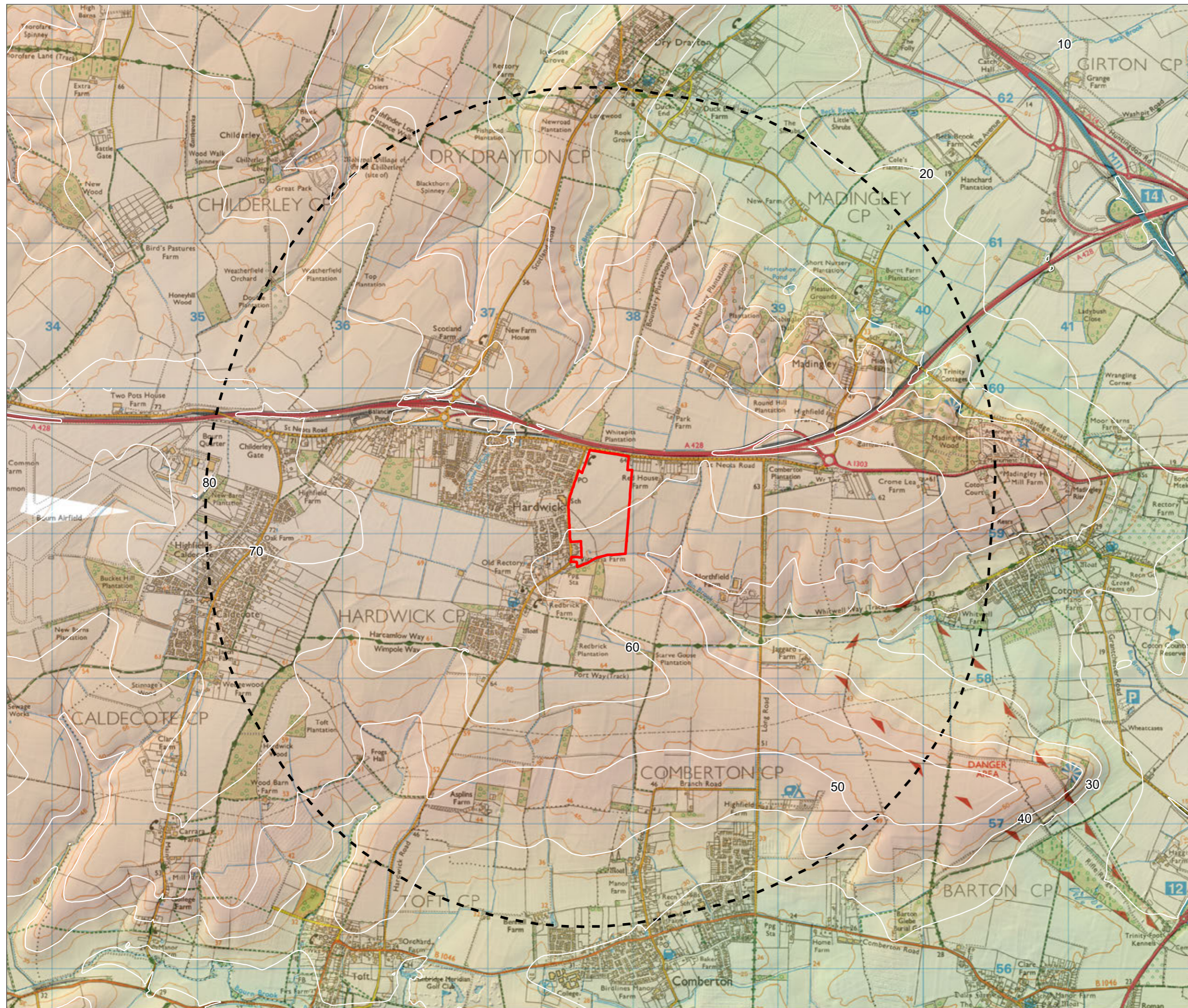
Dwg no/239105/01	Revision
Status	27 February 2025
Scale: 1:10,000 @A3	Drawn by: JC Checked by: TF

Contains OS data © Crown copyright and database rights 2025.
Licensed under the Open Government Licence v3.0.
Licence No. AC0000849896

Copyright torandco limited, 2025

**tor
&CO**

Everdene House
Deansleigh Road
Bournemouth BH7 7DU
020 3664 6755
enquires@torandco.com
torandco.com



- Site boundary
- 2.5km study area

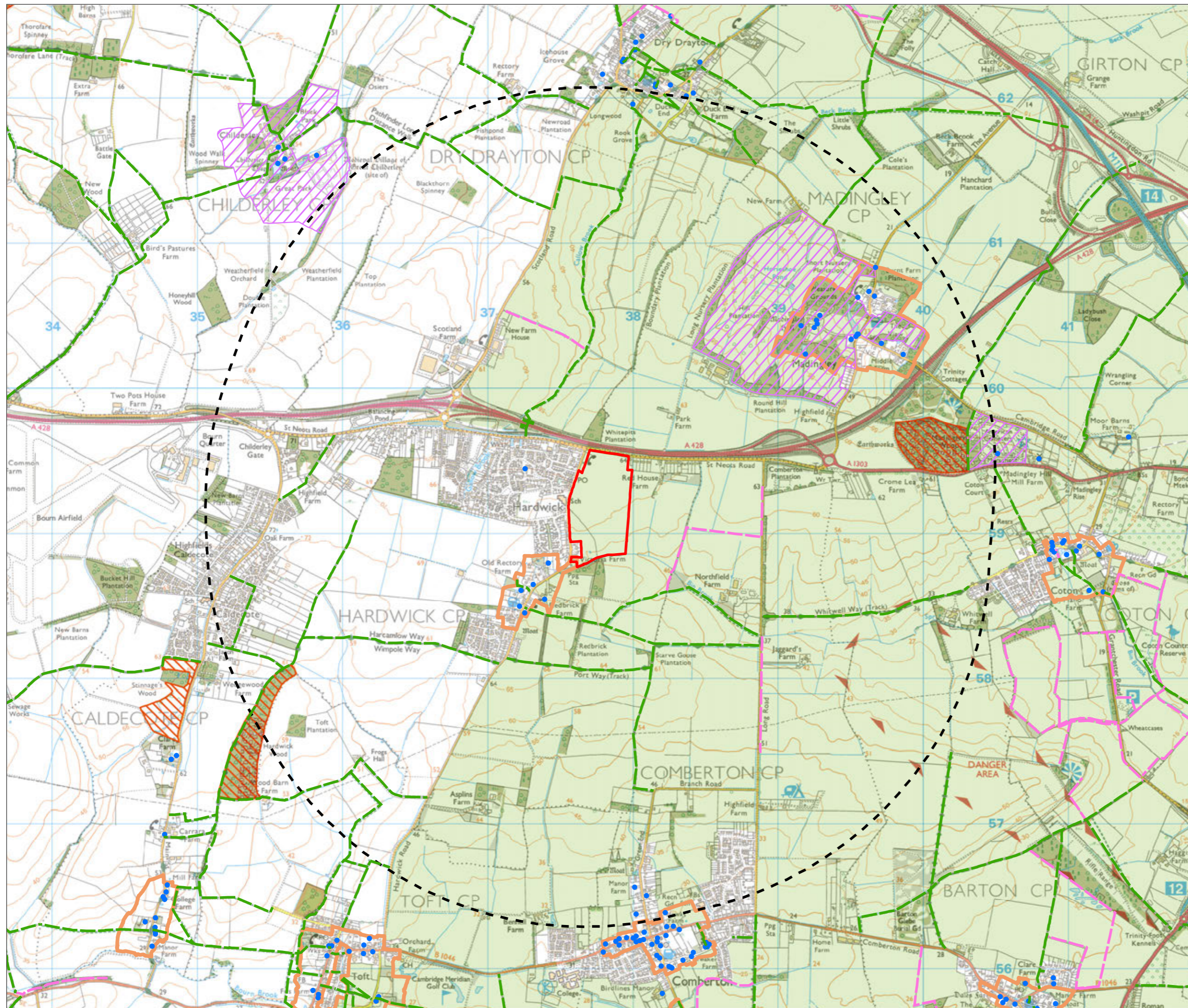
Land East of Hardwick,
 South Cambridgeshire
 Hill Residential and Chivers Farms
 (Hardington) LLP



Figure 2: Topography

Dwg no/239105/02	Revision
Status	27 February 2025
Scale: 1:25,000 @A3	Drawn by: JC Checked by: TF

Contains OS data © Crown copyright and database rights 2025.
 Licensed under the Open Government Licence v3.0.
 Licence No. AC0000849896
 Copyright torandco limited, 2025



- Site boundary
- 2.5km study area
- Woodland
- Rights of way
- Permissive footpaths
- Listed buildings
- Registered parks and gardens
- Ancient woodland
- Site of Special Scientific Interest
- Green belt
- Conservation areas

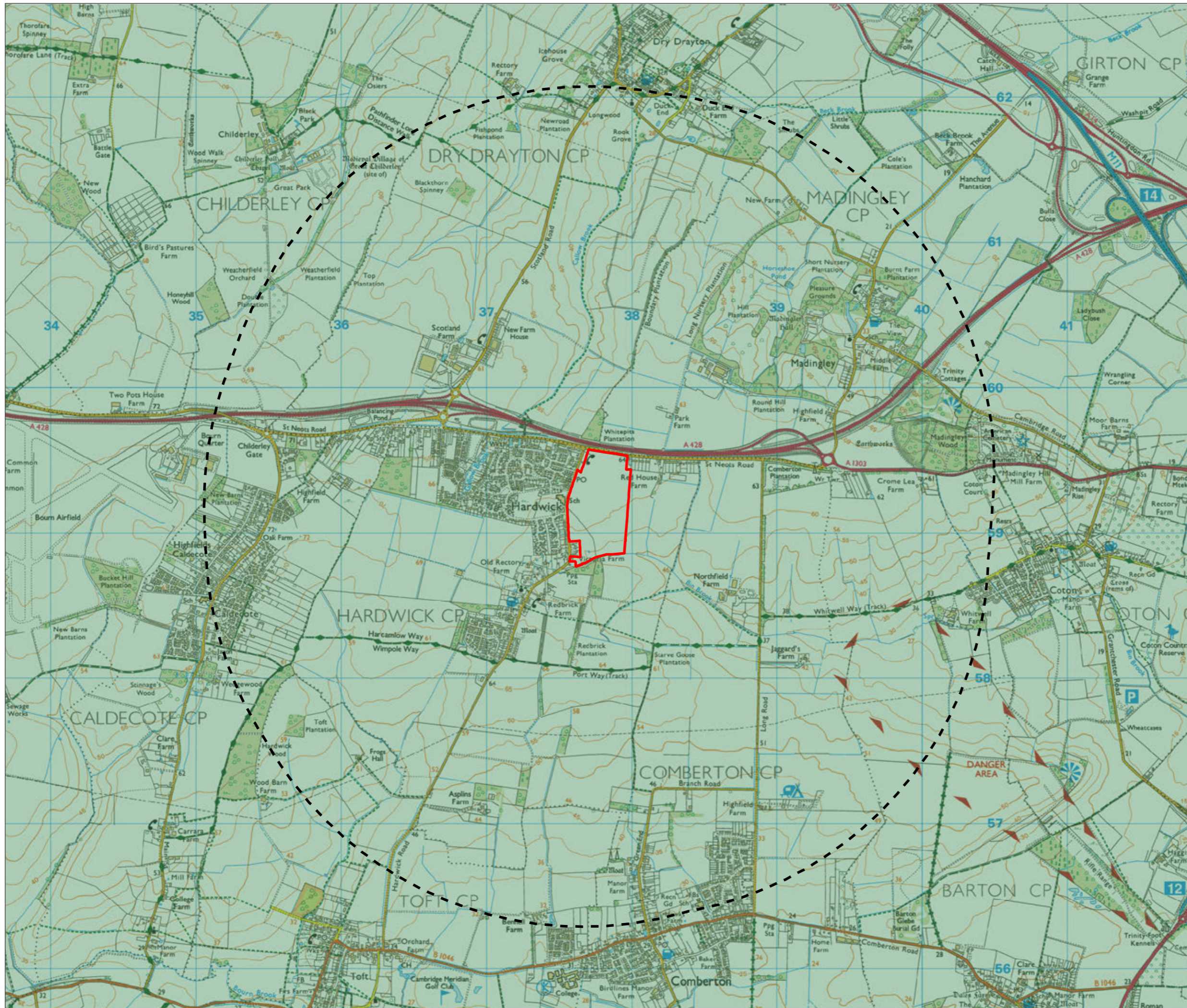
Land East of Hardwick,
 South Cambridgeshire
 Hill Residential and Chivers Farms
 (Hardington) LLP



Figure 3: Designations

Dwg no/239105/003	Revision
Status	27 February 2025
Scale: 1:25,000 @A3	Drawn by: JC Checked by: TF

Contains OS data © Crown copyright and database rights 2025. Licensed under the Open Government Licence v3.0. Licence No. AC0000849896 © Natural England copyright. Contains Ordnance Survey data © Crown copyright and database right 2025. © Historic England copyright. Contains public sector information licensed under the Open Government Licence v3.0. Copyright torandco limited, 2025



- Site boundary
- 2.5km study area
- Bedfordshire and Cambridgeshire Claylands

Land East of Hardwick,
 South Cambridgeshire
 Hill Residential and Chivers Farms
 (Hardington) LLP

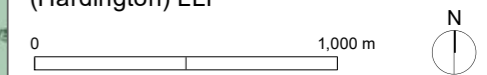


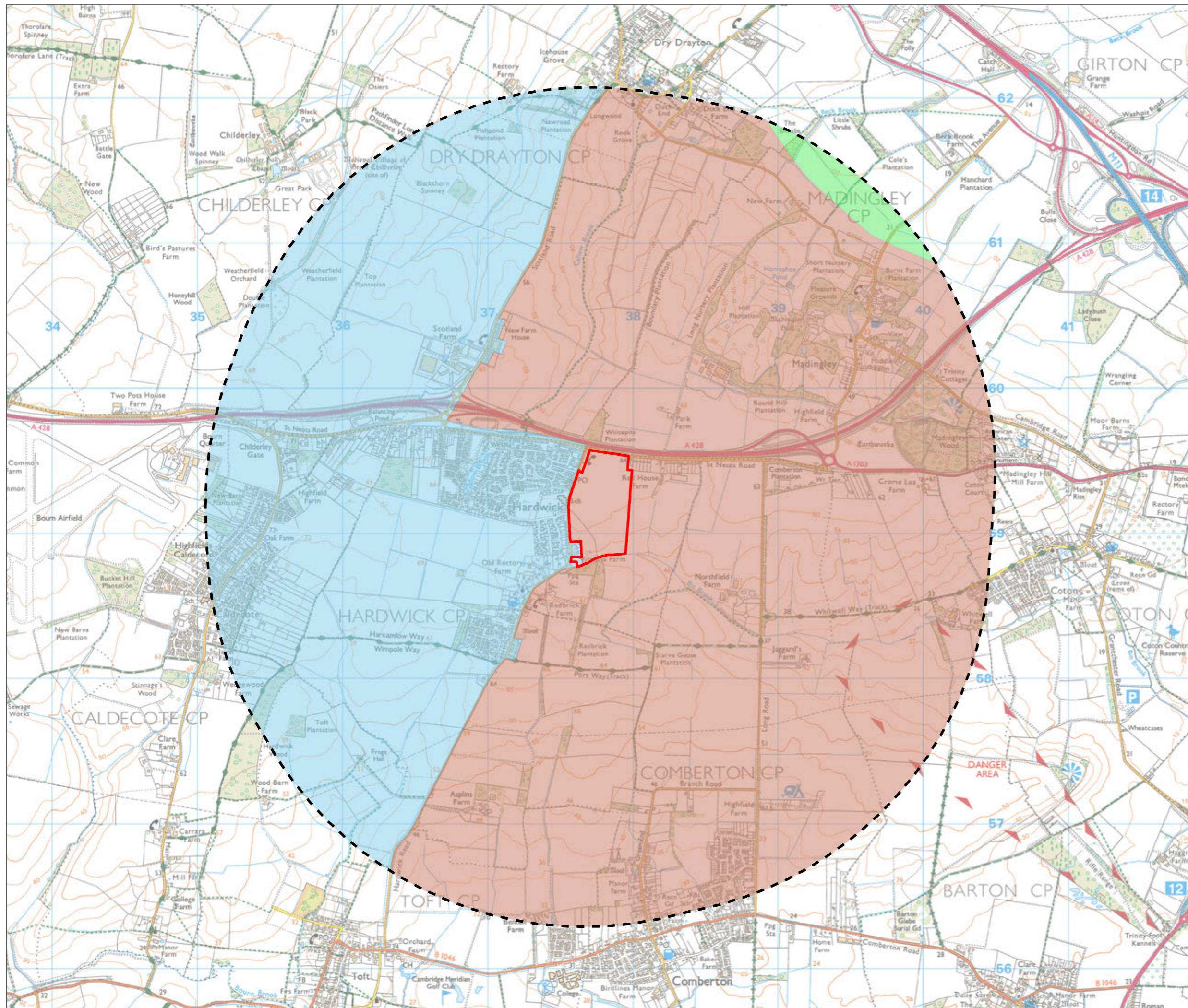
Figure 4: National landscape character areas

Dwg no/239105/004	Revision
Status	27 February 2025
Scale: 1:25,000 @A3	Drawn by: JC Checked by: TF

Contains OS data © Crown copyright and database rights 2025.
 Licensed under the Open Government Licence v3.0.
 Licence No. AC0000849896. © Natural England copyright.
 Contains Ordnance Survey data
 Copyright torandco limited, 2025



Everdene House
 Deansleigh Road
 Bournemouth BH7 7DU
 020 3664 6755
 enquires@torandco.com
 torandco.com



- Site boundary
- 2.5km study area
- Western Claylands (Cambridge Landscape guidelines 1991)
- Claylands: 5A. Western Claylands
- Fen Edge: 2A. Western Fen Edge

Land East of Hardwick, South Cambridgeshire
 Hill Residential and Chivers Farms (Hardington) LLP

0 1,000 m

N

Figure 5: Local landscape character areas

Dwg no/239105/005	Revision
Status	27 February 2025
Scale: 1:25,000 @A3	Drawn by: JC Checked by: TF

Based upon the 2021 Ordnance Survey 1:25,000 colour raster map with the permission of the Ordnance Survey on behalf of Her Majesty's Stationery Office, © Crown copyright. Licence No. 100019980. Data source: LDA Design, Cambridge Green Belt Study 2015. Cambridge Landscape guidelines 1991

Copyright Terence O'Rourke Ltd, 2021

TERENCE O'ROURKE

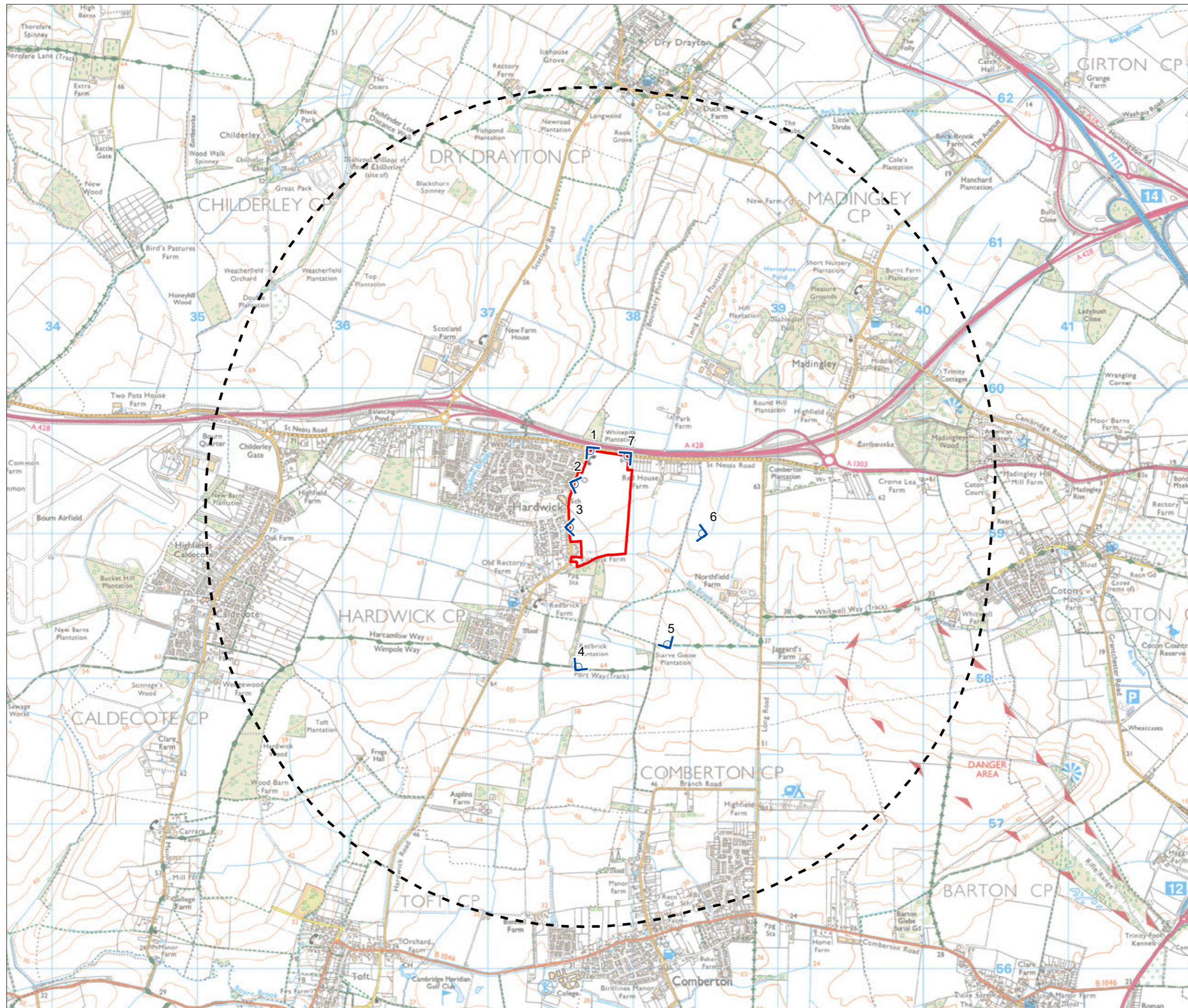
LONDON
23 Heddon Street
London W1B 4BQ

BIRMINGHAM
Enterprise House 115 Edmund Street
Birmingham B3 2HJ

BOURNEMOUTH
Everdene House Deansleigh Road
Bournemouth BH7 7DU

TELEPHONE
020 3664 6755

www.torltd.co.uk



- Site boundary
- ↙ Viewpoint locations
- 2.5km study area

Land East of Hardwick,
 South Cambridgeshire
 Hill Residential and Chivers Farms
 (Hardington) LLP



Figure 6: Viewpoint locations plan

Dwg no/239105/01	Revision
Status	27 February 2025
Scale: 1:25,000 @A3	Drawn by: JC Checked by: TF

Contains OS data © Crown copyright and database rights 2025.
 Licensed under the Open Government Licence v3.0.
 Licence No. AC0000849896
 Copyright torandco limited, 2025

St. Neots Road

Mature vegetation within private curtilage

Cambridge Road



Approximate extent of site

Hedgerow / hedgerow trees on western boundary of site

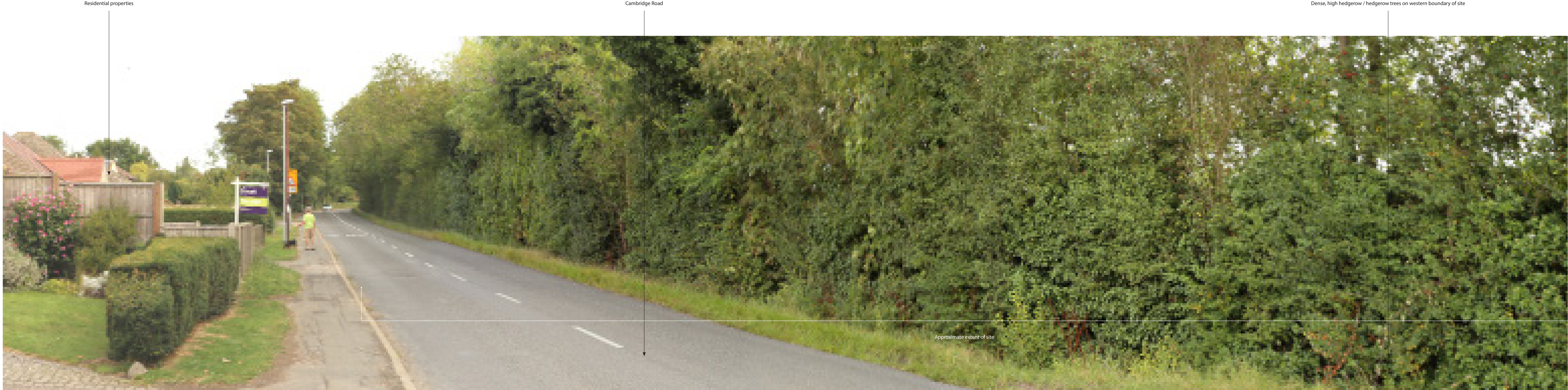
Cambridge Road

Parking adjacent to local shop

Residential properties



Approximate extent of site



Redbrick Plantation

Agricultural barn to the south of St. Neots Road

Vegetation adjacent to drainage ditch, south of public right of way (ref: 114/3)

Hedgerow on northern edge of Harcamlow Way / Whitwell Way



Approximate extent of site





Hedgerow adjacent to Harcamlow Way / Whitwell Way

Starve Goose Plantation

Redbrick Plantation

Residential properties on Kesters Close

Permissive footpath, west of Long Road

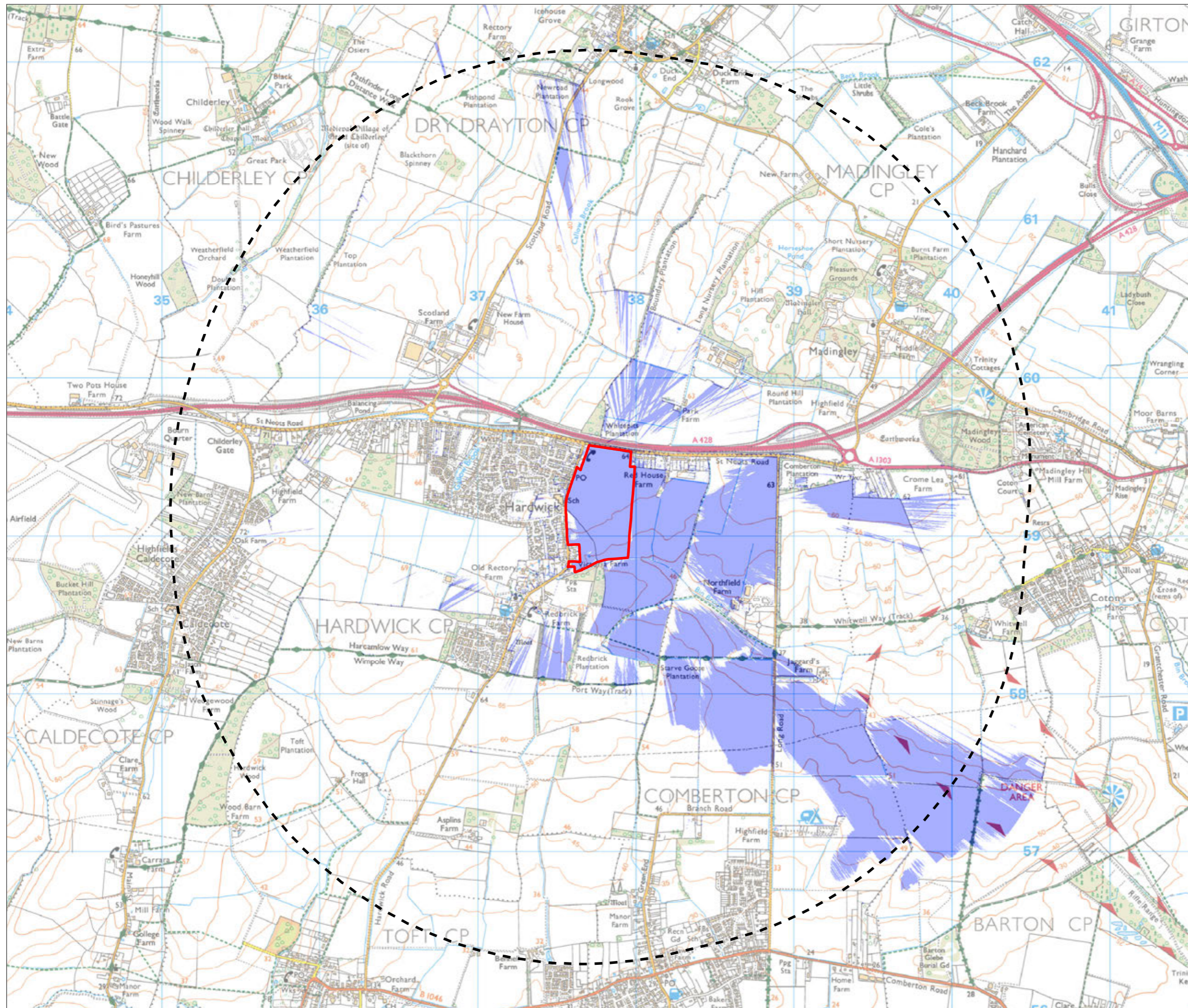
Residential properties on Cambridge Road

Approximate extent of site



Residential property on Cambridge Road

St Neot's Road



- Site boundary
- 2.5km study area
- ZTV

Land East of Hardwick,
 South Cambridgeshire
 Hill Residential and Chivers Farms
 (Hardington) LLP

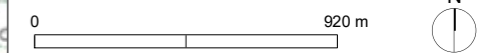


Figure 14: Zone of theoretical visibility

Dwg no/239105/014	Revision
Status	27 February 2025
Scale: 1:22,968 @A3	Drawn by: JC Checked by: TF

Contains OS data © Crown copyright and database rights 2025.
 Licensed under the Open Government Licence v3.0.
 Licence No. AC000849896

Copyright torandco limited, 2025



Everdene House
 Deansleigh Road
 Bournemouth BH7 7DU
 020 3664 6755
 enquires@torandco.com
 torandco.com